






# TICKET PRINT

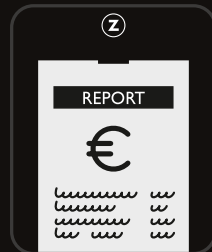
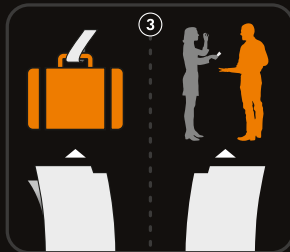
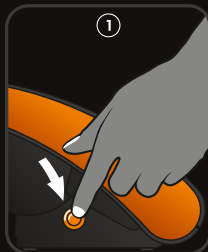
TICKETPRINT.EU



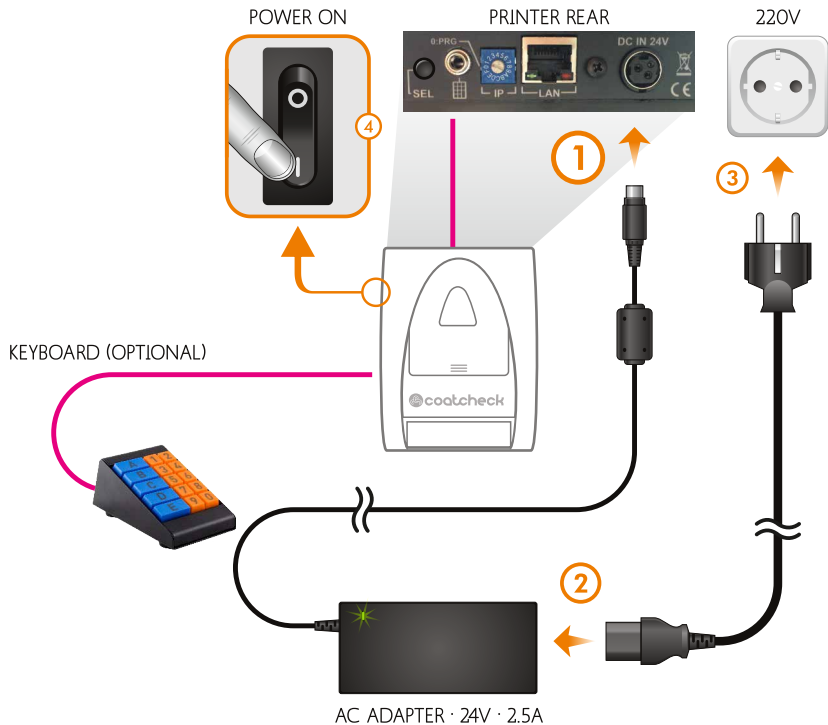
-  CLOAKROOM, LUGGAGE TAG & ENTRY TICKETING SYSTEM
-  SYSTÈME D'ÉTIQUETAGE POUR VESTIAIRES, BAGAGES ET TICKETS
-  GARDEROBEN, GEPÄCKAUFBEWAHRUNG & EINTRITTSKASSE TICKETSYSTEM
-  IMPRESORA Y SISTEMA DE CONTROL PARA GUARDARROPA, EQUIPAJE Y ENTRADAS
-  GARDEROBE, ENTREE & BAGAGELABEL KASSA TICKET SYSTEM

# onefive ticketing system

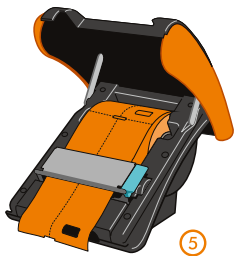
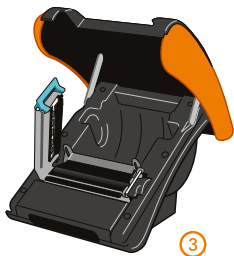
user manual



# QUICK CONNECT



## QUICK LOAD



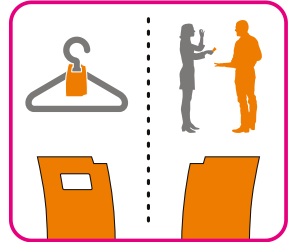
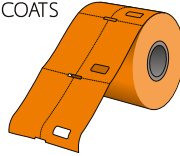
# NORMAL USE



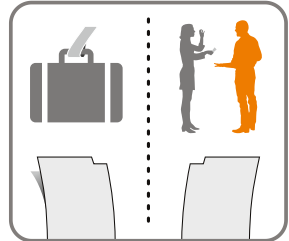
PRESS  
SHORT



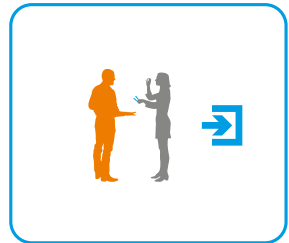
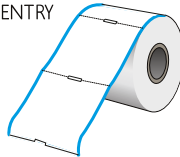
COATS



BAGS



ENTRY



# TOTALS, NO RESET (X-REPORT & TICKET COUNT)



PRESS & HOLD



RELEASE  
AFTER 5 SEC.

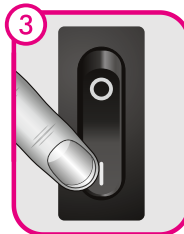
## TOTALS & RESET (Z-REPORT)



POWER OFF



PRESS & **HOLD**



POWER ON

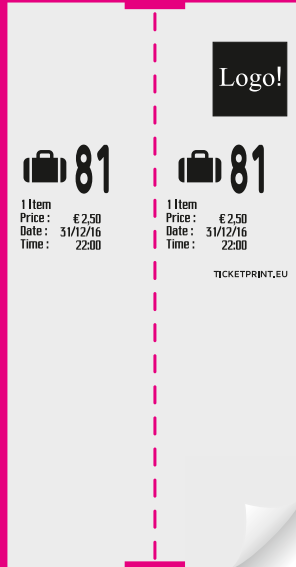
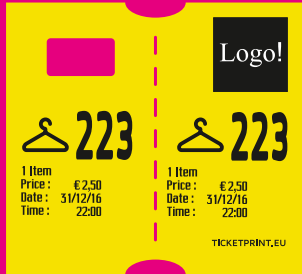


RELEASE  
AFTER 5 SEC.

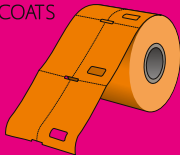
AFTER PRINTING A Z-REPORT, THE COUNTER WILL RESET TO ZERO



# TICKET EXAMPLES



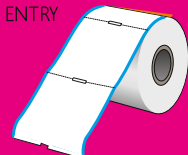
COATS



BAGS



ENTRY





## SETUP AND TICKET LAYOUT EDITING



DOWNLOAD AND  
INSTALL SOFTWARE

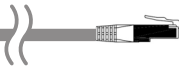


Go to [www.coatcheck.eu](http://www.coatcheck.eu)  
download and instal the latest software.

PRINTER REAR



CONNECT PRINTER TO PC OR HUB  
WITH PROVIDED NETWORK CABLE



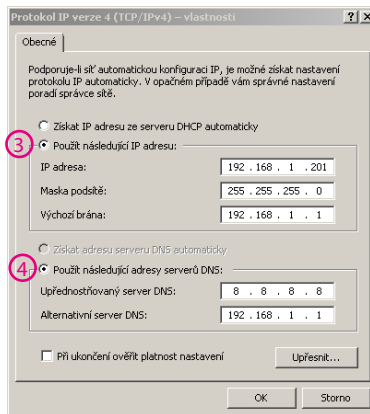
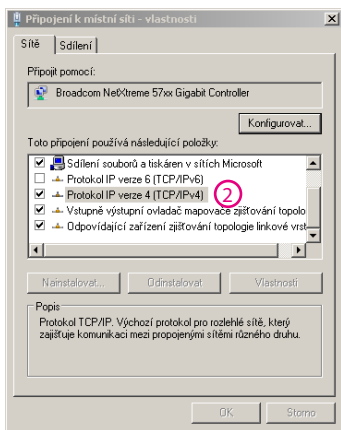
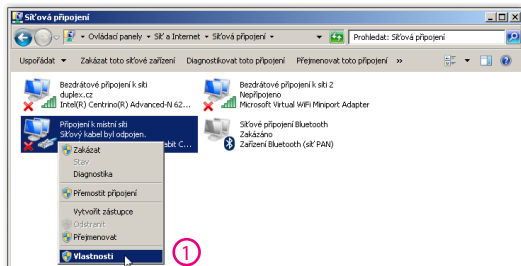
NETWORK HUB (OPTIONAL)



WINDOWS™ PC

# SOMETIMES YOU NEED TO CHANGE IP ADDRESS

If your computer cant connect to printer you need to change ipe address in network connection.



1



Switch **OFF** WiFi on your computer

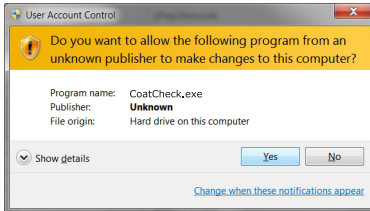
2



## START COATCHECK SOFTWARE

Click the **CONNECT** button. The CoatCheck software will try to connect with the printer. The indicator will blink green / red. **During connection, your PC may not have access to internet or other network resources.**

3

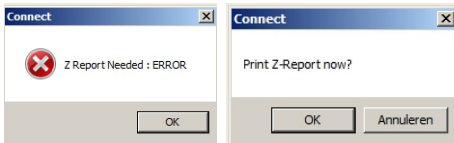


Give the software permission to connect to the printer by pressing Yes.



**First print a Z-report or the printer will not enter setup mode.**

4



You can print the Z-Report from the software.

cootcheck - Ver 4.02

Language  
English

1

Connect

cootcheck Ver 4.02

Disconnect

19

**Printer Settings**

2

Printer Language English

Currency €

[1] Company name Your Company

[2] City The City

[3] Website yourcompany.com

12

13

Print logo Yes

Buttons Settings

Logo Logo 2 Voucher Image

3

Load Image...

10 Read Settings

11 Send Settings

4 Reset to default Settings

5 Reset Z Report Counter

6 Synch. Date and Time

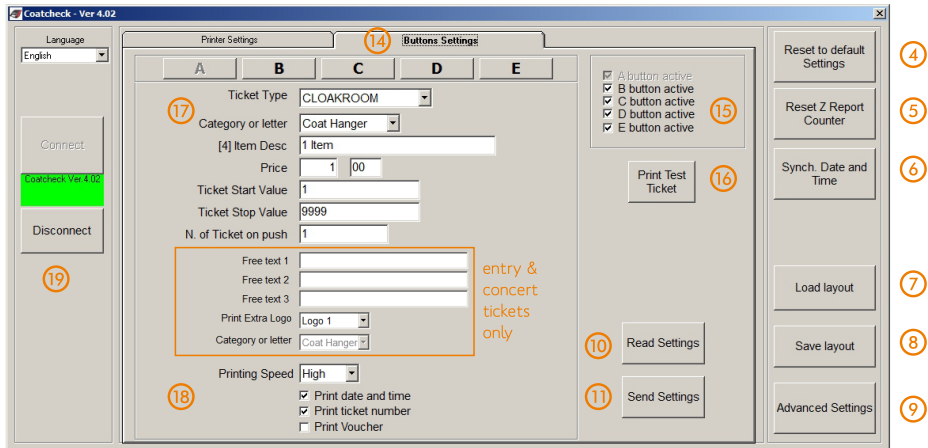
7 Load layout

8 Save layout

9 Advanced Settings

The screenshot displays the 'cootcheck - Ver 4.02' application window. On the left, there is a sidebar with a 'Language' dropdown set to 'English' (1), a 'Connect' button, a green status bar showing 'cootcheck Ver 4.02', a 'Disconnect' button, and a circled '19'. The main area is divided into two tabs: 'Printer Settings' and 'Buttons Settings'. Under 'Printer Settings', there are fields for 'Printer Language' (English, 2), 'Currency' (€, 12), '[1] Company name' (Your Company), '[2] City' (The City), '[3] Website' (yourcompany.com), and 'Print logo' (Yes, 13). The 'Buttons Settings' tab shows a preview of a voucher image with the 'cootcheck' logo and 'Max Size (pixels) = 240x160'. Below the preview is a 'Load Image...' button (3). At the bottom of the main area are 'Read Settings' (10) and 'Send Settings' (11) buttons. On the right side, there is a vertical column of buttons: 'Reset to default Settings' (4), 'Reset Z Report Counter' (5), 'Synch. Date and Time' (6), 'Load layout' (7), 'Save layout' (8), and 'Advanced Settings' (9).

- ① Set software language: English, Nederlands, Deutsch, Français, Español.
- ② Set printer language: English, Nederlands, Deutsch, Français, Español.  
Set currency to €, £, \$ or empty for other currencies.  
Set company name, city and website.
- ③ Load your logo and voucher images. For best results, use exact pixel sizes specified and BMP files in black & white only. You can download samples from [www.cloakroom-solutions.com](http://www.cloakroom-solutions.com).
- ④ Reset to factory settings: restores all standard settings, cloakroom tickets A-E.
- ⑤ Reset Z-Report Total counter and Grand Total.
- ⑥ Synchronize date & time of the printer with PC date & time.
- ⑦ Load layout file stored on your pc.
- ⑧ Save layout file to your pc: this way you can keep your settings easily stored.
- ⑨ Advanced settings is password protected, agents only.
- ⑩ Read programmed settings from printer memory to PC.
- ⑪ Send programmed settings from PC to printer memory.
- ⑫ Print Grand Total on X-report and Z-report [yes] or [no].
- ⑬ Print Logo on Tickets, or company details.
  
- ⑰ During programming and connection please do NOT switch off the printer. After finishing, please press Disconnect and wait for a ticket to be printed. Your PC's network and internet connection settings (IP) are now restored.



14 15 These functions are only visible when the external 5 button keyboard was connected before starting the software.

- 14 Select keyboard button A - E, for use with 5-button external keyboard.
- 15 Keyboard button B - E on/off. Button A is always active, and the same as the side button.
- 16 Print test ticket.
- 17 Set ticket type: cloakroom, entry (1-part), concert (2-part)/  
Category or letter: symbol or letter. Example: coathanger, A,B,C,D, etc.  
Item Desc. example: 1 item or 1 coat, only for cloakroom tickets.  
Price: price of your ticket. Price set to 0 = no price on tickets.  
Ticket start value: numbers start from here.  
Ticket stop value: numbers stop here. Example: set to 100, printer prints max. to number 100.  
No Tickets on push: quantity of tickets printed every time side button is pressed.

Free text and extra logo are for Entry (1-part) and Concert (2-part) tickets only.

- 18 Tick options:

Send printing speed. Lowest speed for highest quality, highest speed recommended as standard.

Date and time on tickets [yes] or [no].

Print ticket number [yes] or [no].

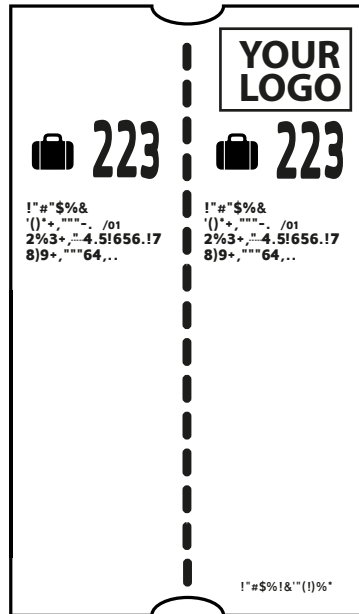
Print Voucher [yes] or [no]: prints a voucher image on a second ticket.

- 19 During programming and connection please do NOT switch off the printer. After finishing, please press Disconnect and wait for a ticket to be printed. Your PC's network and internet connection settings (IP) are now restored.

# TICKET SAMPLES - CLOAKROOM & LUGGAGE TAG



3



3

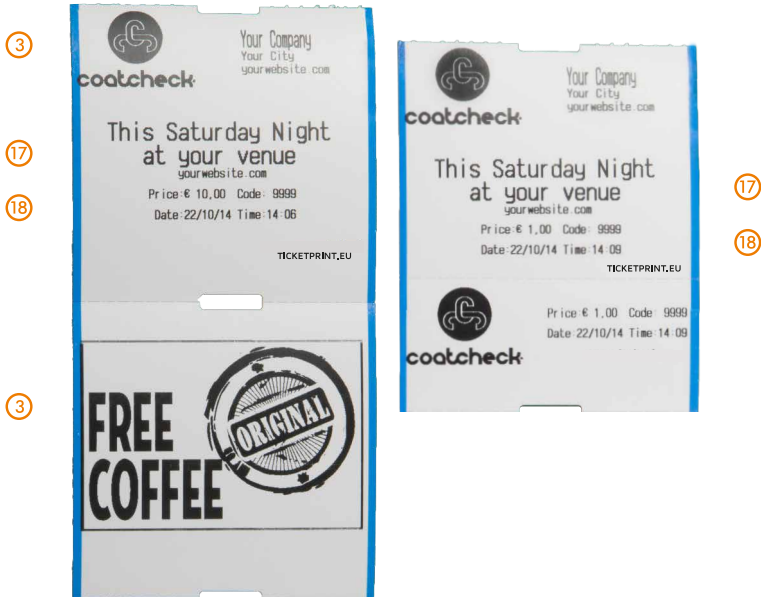
17

18

- 18 Print extra voucher after ticket [yes] or [no]. Prints the voucher image on a second ticket



# TICKET SAMPLES - ENTRY & CONCERT



①⑧

Print extra voucher after ticket [yes] or [no].  
Prints the voucher image on a second ticket



 **coatcheck**

1 Item  
Price \$ 1.00  
Date 01/10/14  
Time 17:28

 **14**

1 Item  
Price \$ 1.00  
Date 01/10/14  
Time 17:28

 **14**



# KEYBOARD



Optional keyboard available to use multiple ticket settings.  
Program one layout with each key: A, B, C, D, E.  
Use the number buttons to print any number of tickets.

Switch OFF printer. Connect keyboard. Start Printer.  
After this, start the software and 5-button options will  
become available.

Use the software to program up to 5 ticket layouts.

## MANUAL SETUP (NO NETWORK CONNECTION OR SOFTWARE)



Please note manual setup is not easy, and only recommended when you want to change simple settings and have no access to the Windows software.

### ENTER SETUP MODE



1

turn power OFF



2

press & **hold** the  
PRINT and MODE  
buttons



3

**while holding**  
PRINT and MODE,  
turn power ON



4

release buttons  
when printer  
starts printing  
the setup menu



5

open the printer  
cover to see  
changes in the  
settings



Make sure you have printed a Z-report first or the printer will not enter setup mode.

## MANUAL SETUP MODE BUTTONS

The following buttons / switches are used to enter the manual setup mode, select fields, change values and save settings.



SYMBOL	NAME	PRESS NORMAL	PRESS LONG
	PWR OFF	- turns the power off in all modes	
	PWR ON	- turns the power on in all modes - enters setup mode when used while PRINT & MODE are pressed	
	PRINT	- next field - next value	- reset field to default
	SEL	- enter	- save field

## SETUP EXAMPLE : Changing the ticket symbol



- first enter the setup mode as described before

BUTTON	REPEATS	DESCRIPTION
	7x	- select the SYMBOL field A ▶ B ▶ C ▶ 1 ▶ 2 ▶ 3 ▶ 4 ▶ 5 LANGUAGE DATE TIME FIELD 1 FIELD 2 FIELD 3 ITEM NAME SYMBOL
	1x	- enter EDIT mode for selected field ( 5 : SYMBOL )
	1x	- change to next value (  to  )
	1x 5 SEC	- SAVE selected field (locks the new value  in field 5 )



- turn power off to exit setup mode



# SETTINGS OVERVIEW

When entering setup mode and after every saved change, the printer will print a setup overview (as displayed below).

**Current Settings**

COATCHECK ORANGE  
Ticketprinter  
www.garderobe.nl

1 Item  
Price: € 1,00  
Date: 31/12/11  
Time: 22:00

1 Item  
Price: € 1,00  
Date: 31/12/11  
Time: 22:00

TICKETPRINT.EU

Ticket Stop Value : 999  
Ticket Start Value : 1  
N. of Tickets on push : 1  
Price : 1,00  
Currency : €

<b>A</b>	LANGUAGE .....	DEFAULT = English
<b>1</b>	FIELD 1 : COMPANY NAME .....	DEFAULT = "COATCHECK ORANGE"
<b>2</b>	FIELD 2 : CITY .....	DEFAULT = "Ticketprinter"
<b>3</b>	FIELD 3 : WEBSITE .....	DEFAULT = "www.garderobe.nl"
<b>5</b>	CATEGORY OR LETTER .....	DEFAULT = "A"
	COUNTER	
<b>4</b>	ITEM DESC. ....	DEFAULT = 'ITEM'
	PRICE	
<b>B</b>	DATE (DD/MM/YY)	
<b>C</b>	TIME (HH:MM)	
<b>8</b>	COUNTER ENDS AT ... ..	DEFAULT = 999
<b>7</b>	COUNTER STARTS AT ... ..	DEFAULT = 1
<b>9</b>	NUMBER OF TICKETS TO PRINT EACH TIME THE PRINT BUTTON IS PRESSED	DEFAULT = 1
<b>10</b>	PRICE PER ITEM .....	DEFAULT = 1,00
<b>6</b>	CURRENCY SYMBOL .....	DEFAULT = €

# TICKET PRINT

TICKETPRINT.EU



To download the latest software, order more tickets, subscribe to our newsletter or get support, visit the CoatCheck portal

[coatcheck portal](#)

